

BuckleyBrown
ESTATE AGENTS



£170,000

Dog Rose Drive, Wingerworth,
Chesterfield,

Welcome to **BuckleyBrown**, where every home is carefully presented, so you can explore with clarity and confidence.

BuckleyBrown
ESTATE AGENTS

A fantastic opportunity to step onto the property ladder with this beautifully presented new build, available at 60% shared ownership. Offering generously sized bedrooms and thoughtfully designed living spaces, this home perfectly combines modern style with everyday practicality. Bright, spacious, and finished to a high standard throughout—this is one not to miss.

Luke, Valuer



MODERN AND SOPHISTICATED AESTHETIC

Modern three-storey shared ownership home with large private garden

This modern three-storey shared ownership property offers contemporary living across a well-designed and versatile layout. Finished with a clean, stylish aesthetic throughout, the home combines comfort and practicality with a fresh, up-to-date feel. Generous living spaces are complemented by a thoughtfully arranged interior, ideal for modern lifestyles. Externally, the property benefits from a large private garden, providing an excellent space for relaxing, entertaining, or family use.



THE FINER DETAILS

This beautifully presented semi-detached three-storey home is located in the sought-after area of Wingerworth, Chesterfield, and offers a refined blend of modern design, light-filled interiors, and a minimal aesthetic throughout.

The property has been thoughtfully designed to create a calm, airy feel, with clean lines, neutral tones, and a strong sense of space across all floors.

The ground floor features a welcoming entrance hall leading to a spacious lounge filled with natural light, creating an inviting yet contemporary living area. The sleek, modern kitchen/diner forms the heart of the home, designed with both style and practicality in mind, offering ample space for dining and entertaining. A convenient WC completes this level, enhancing everyday functionality.

On the first floor, there are two generously sized bedrooms, both continuing the home's light and minimal aesthetic, along with a beautifully finished family bathroom. Each space has been designed to feel calm and uncluttered, with a focus on comfort and modern living.

The second floor is dedicated to an impressive main bedroom suite, offering a private and peaceful retreat. This level also includes a versatile study area, ideal for home working or relaxation, along with a stylish en suite shower room, all finished to a high contemporary standard.

Externally, the property continues to impress with a garage and driveway providing off-street parking. To the rear, there is a beautifully maintained garden featuring a combination of lawn and patio areas, perfectly suited for outdoor dining, entertaining, or simply enjoying the peaceful surroundings in a private setting.





BuckleyBrown
ESTATE AGENTS





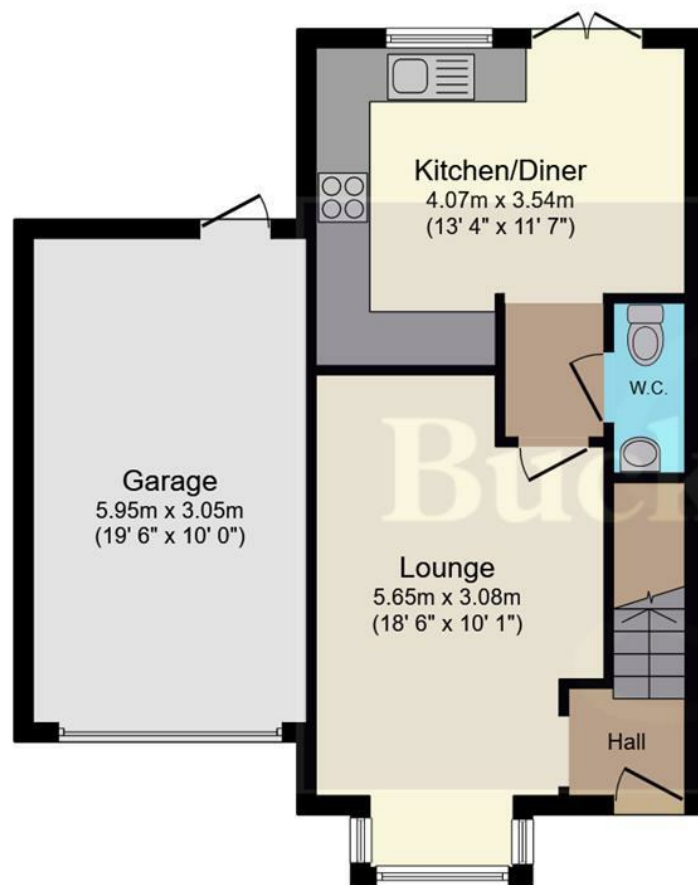


LIFE IN WINGERWORTH

Life in Wingerworth, Chesterfield offers a highly desirable blend of village charm and modern convenience.

Surrounded by attractive countryside, the area is known for its peaceful residential setting, strong community feel, and well-regarded schools, making it particularly popular with families. Despite its quieter village atmosphere, Wingerworth benefits from excellent access to Chesterfield town centre, providing a wide range of shops, restaurants, and amenities within easy reach. With beautiful nearby walks, green open spaces, and strong transport links, it strikes a perfect balance between relaxed rural living and everyday practicality.





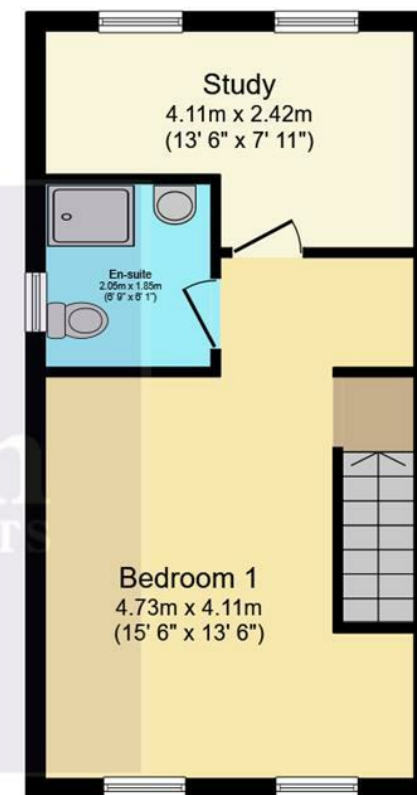
Ground Floor

Floor area 52.5 sq.m. (565 sq.ft.)



First Floor

Floor area 34.2 sq.m. (368 sq.ft.)



Second Floor

Floor area 34.2 sq.m. (369 sq.ft.)

Total floor area: 121.0 sq.m. (1,302 sq.ft.)

This floor plan is for illustrative purposes only. It is not drawn to scale. Any measurements, floor areas (including any total floor area), openings and orientations are approximate. No details are guaranteed, they cannot be relied upon for any purpose and do not form any part of any agreement. No liability is taken for any error, omission or misstatement. A party must rely upon its own inspection(s). Powered by www.Propertybox.io

Key Features

Semi-detached three-storey modern home

Located in sought-after Wingerworth, Chesterfield

Stylish, contemporary design with a light and airy minimal aesthetic throughout

Spacious lounge filled with natural light

Modern kitchen/diner ideal for entertaining and family living

Ground floor WC for added convenience

Two well-proportioned first-floor bedrooms

Impressive second-floor main bedroom suite



These particulars are intended as a guide only and do not form part of any offer or contract. All descriptions, measurements, images and plans are provided for illustration purposes and should not be relied upon as statements of fact. Prospective purchasers should satisfy themselves as to the accuracy of the information. Buckley Brown Estate Agents accept no liability for any loss arising from reliance on these details.

© Buckley Brown Estate Agents 2026. All rights reserved.

Exceptional homes deserve
exceptional representation.

Let's Chat.

01246 605121

bolsover@buckleybrown.co.uk

buckleybrown.co.uk

BuckleyBrown
ESTATE AGENTS